



New



Open



Update



Save



Learn



Predict



Settings



Help



Info



Exit

No Model Loaded





New



Open



Update



Save



Learn



Predict



Settings



Help

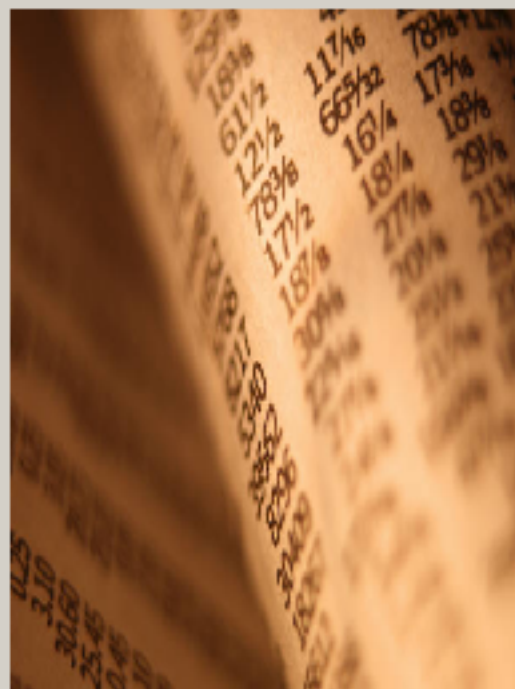


Info



Exit

## Creating model...



Welcome to model creation wizard. This user friendly interface will guide you in developing a model of your stock symbol, and it will assist you and guide you in the optimization of the parameters that will be incorporated into the new equity model. This should result in more accurate forecasts.

Back



Next

Finish

? Help

X Cancel



New



Open



Update



Save



Learn



Predict



Settings



Help



Info



Exit

Creating model... ✕

Please chose the **Stock Symbol** from your current database. This **Symbol nomenclature** will be used as the "default" whenever you wish to open a database, train a dataset, or forecast a symbol.

Type ticker name there

XOM

Choose model name(s)

XOM

Select Data Source...

- Yahoo! Server
- Metastock Files
- CSV Files

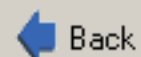
Please choose initial date of downloading history

03/27/2007 15

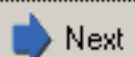
Using 367 days.

Select EOD/EOW modeling

- End-Of-Day
- End-Of-Week

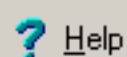


Back



Next

Finish



Help

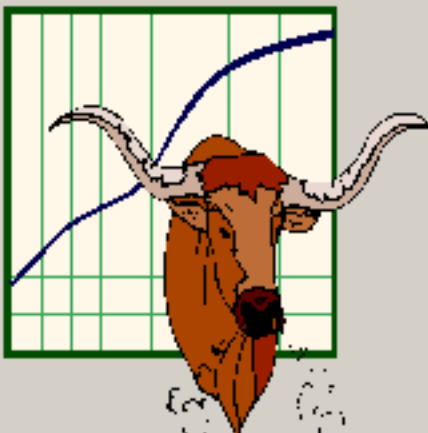


Cancel

New Open Update Save Learn Predict Settings Help Info

Exit

**Creating model...** [X]



Please presume expected market's chaotic character for chosen ticker.

Fast Normal

Chaotic

Fast Normal

Slow Normal

Inert

Very Inert

Do not use filtration

Back Next Finish Help Cancel



New



Open



Update



Save



Learn



Predict



Settings



Help

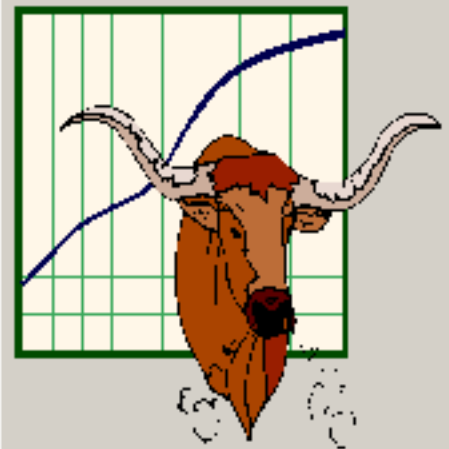


Info



Exit

**Creating model...** [X]



**Please presume expected market's chaotic character for chosen ticker.**

Chaotic [v]

**Select suggested noisness for chosen ticker and preferable data filtration level.**

Do not use filtration [v]

- Do not use filtration
- 1 Filtration level**
- 2 Filtration level
- 3 Filtration level
- 4 Filtration level
- 5 Filtration level
- 6 Filtration level

← Back

→ Next

Finish

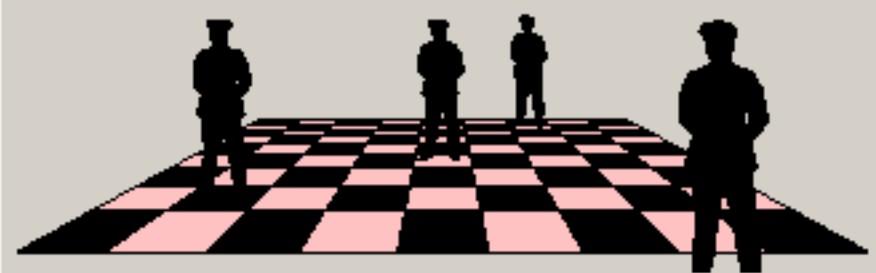
? Help

✗ Cancel

Navigation icons: New (document with plus), Open (folder), Update (circular arrow), Save (floppy disk), Learn (graduation cap), Predict (speech bubble), Settings (gears), Help (question mark), Info (info icon).

Exit button (door icon) labeled "Exit".

**Creating model...** [Close button]



**Please choose a dominant "trading strategy" for implementation within your model.**

Trading Strategy

- Speculative
- Short Term "Buy and Sell"
- Investment "Buy and Hold"

Desired Signals Frequency


2 [dropdown arrow] Bars

Navigation buttons: Back (left arrow), Next (right arrow, highlighted with a dotted border), Finish, Help (question mark), Cancel (red X).

New Open Update Save Learn Predict Settings Help Info

Exit

### Creating model...



**Please choose a level of modeling complexity and genetics implementation...**

Choose structure parameter

- Simple
- Standard
- Complex
- Manual

Structure of neural network

Number of layers

3

Number of neurons in each layer

40

Back Next Finish ? Help X Cancel



New



Open



Update



Save



Learn



Predict



Settings



Help



Info



Exit

Creating model... ✕

**Would you like to "backtest" your model against historical data before feeding the model forward?**

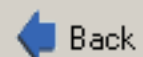
Reserve data for backtesting?

- Yes, reserve \_\_\_\_% of historical data as an "out of sample" dataset for testing.
- No, use all of the available historical data (same as input file)

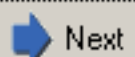
Reserved historical period for testing

How many last days?

15 



Back



Next

Finish



Help



Cancel

Navigation icons: New (document with red arrow), Open (folder), Update (circular arrow), Save (floppy disk), Learn (graduation cap), Predict (speech bubble), Settings (gears), Help (question mark), Info (info icon).

Exit (door icon)

**Creating model...** [Close button]



The model is almost created.  
Press finish to download stock history, calculate all the necessary secondary data and build model.




Navigation buttons: Back (left arrow), Next (right arrow), Finish (flag icon), Help (question mark), Cancel (red X).



Exit

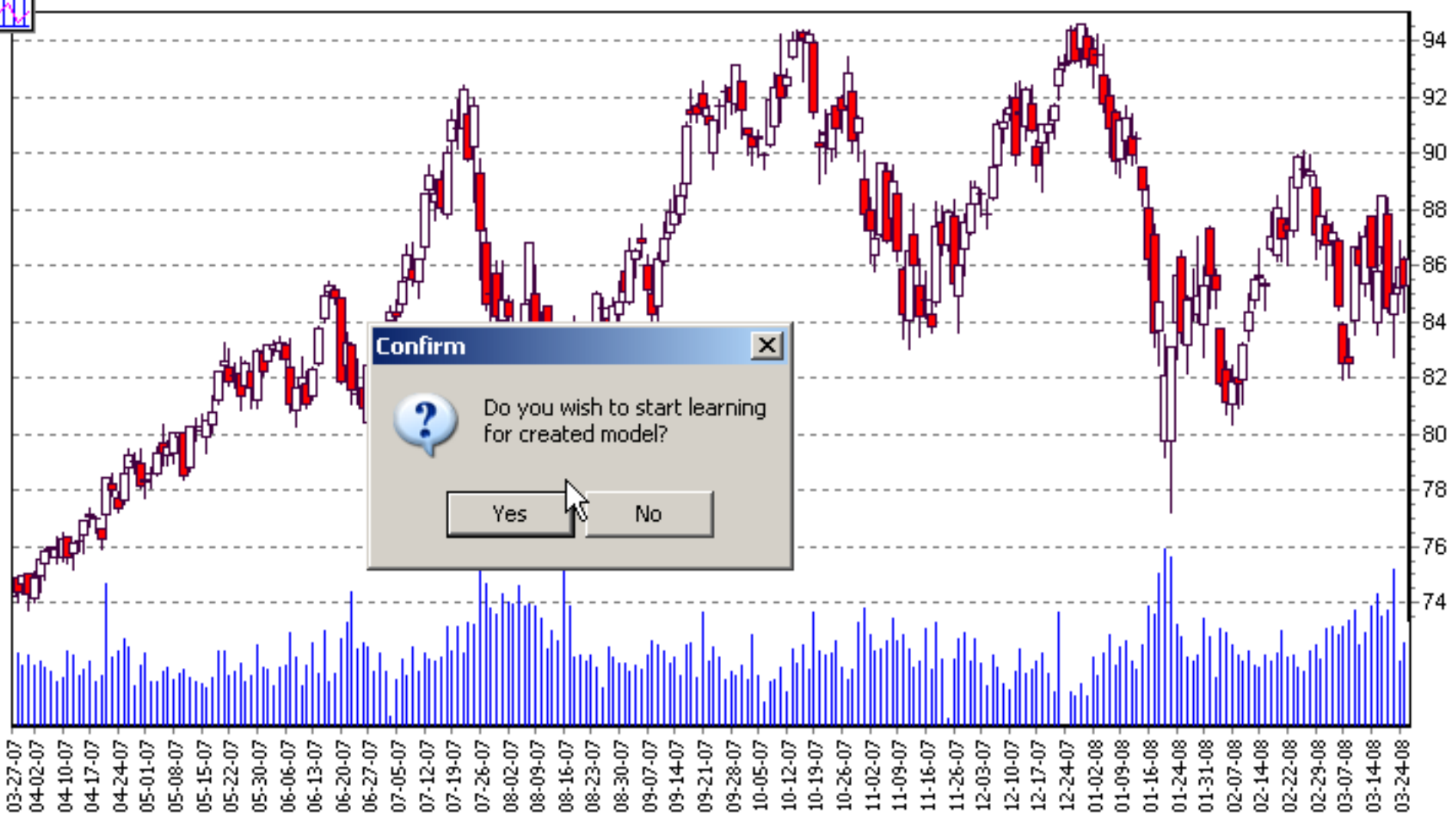
**Confirm** [X]

 This NeuroModel is already exist. Do you wish to overwrite it?

A dialog box with a blue title bar containing the text 'Confirm' and a close button. The main area has a light grey background and contains a question mark icon in a blue speech bubble, followed by the text 'This NeuroModel is already exist. Do you wish to overwrite it?'. At the bottom, there are two buttons: 'OK' and 'Cancel'. A mouse cursor is pointing at the 'OK' button.

New Open Update Save Learn Predict Settings Help Info

Exit



**Confirm** [X]

? Do you wish to start learning for created model?

Yes No

[Zoom In] [Zoom Out] [Reset] [Add] [Print] [Refresh]

Mave ZigZag

New Open Update Save Learn Predict Settings Help Info

Exit



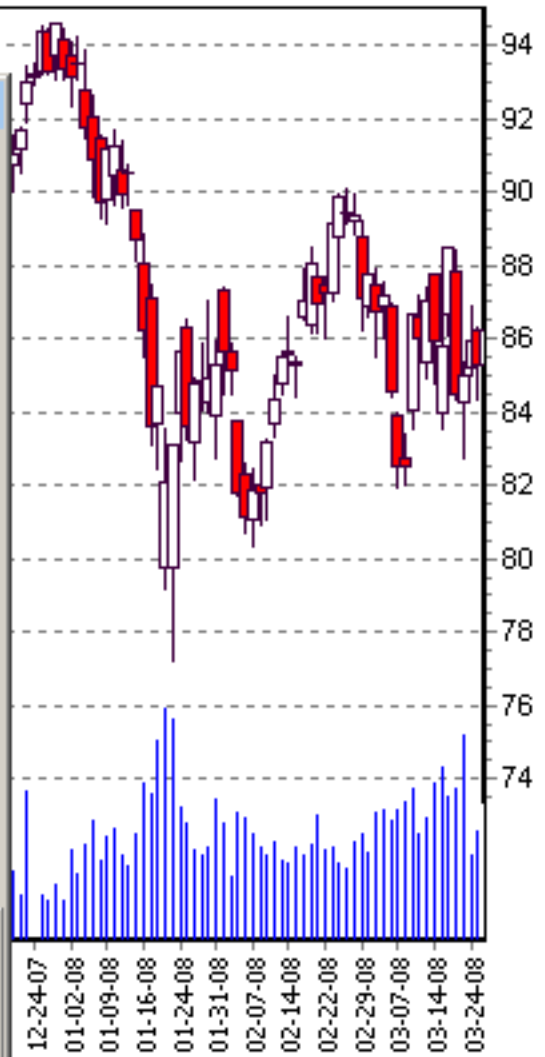
Preparing the model for training...



Please choose forecasting technology.

- Forecasting technology
  - Intuitive forecasting
  - 'From memory' forecasting
  - Associative forecasting

Back Next Finish ? Help X Cancel



Vertical toolbar with icons for chart manipulation and the text 'ZigZag' and 'Mave'.

New Open Update Save Learn Predict Settings Help Info

Exit



[-] [ ] [X]  
 [ZigZag]  
 [Zoom]  
 [Reset]  
 [Zoom In]  
 [Zoom Out]  
 [Print]

Preparing the model for training...



Please choose forecasting technology.

- Forecasting technology
- Intuitive forecasting
  - 'From memory' forecasting
  - Associative forecasting

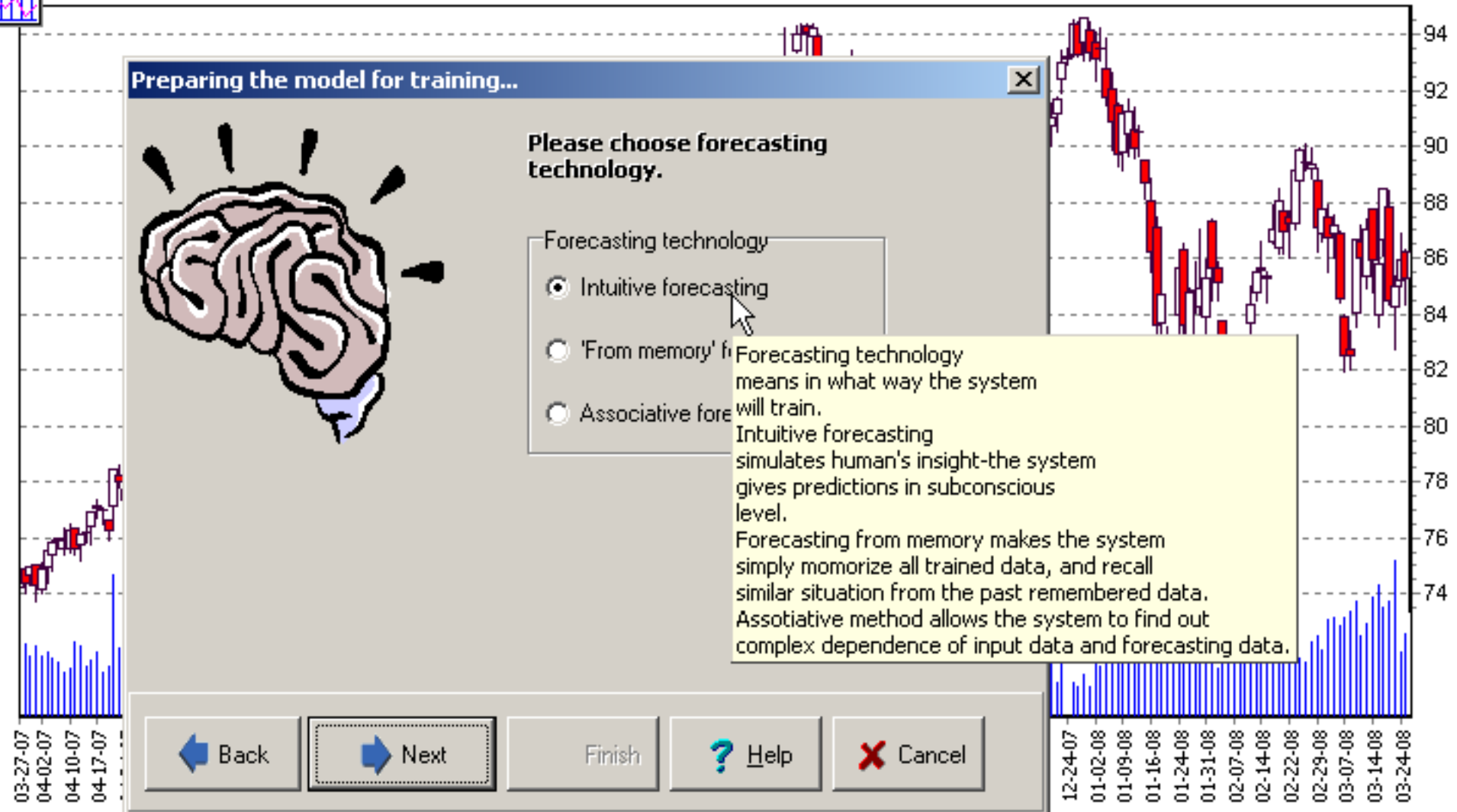
Forecasting technology means in what way the system will train.

Intuitive forecasting simulates human's insight-the system gives predictions in subconscious level.

Forecasting from memory makes the system simply memorize all trained data, and recall similar situation from the past remembered data.

Associative method allows the system to find out complex dependence of input data and forecasting data.

Back Next Finish ? Help X Cancel



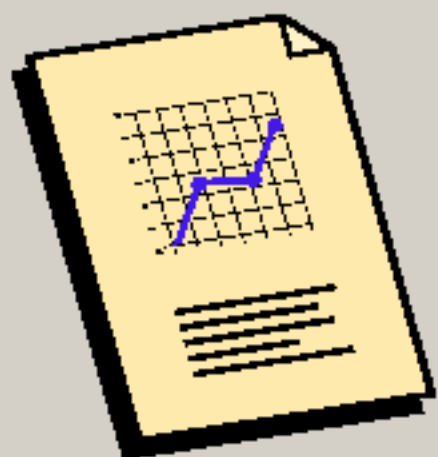
Mave ZigZag

New Open Update Save Learn Predict Settings Help Info

Exit



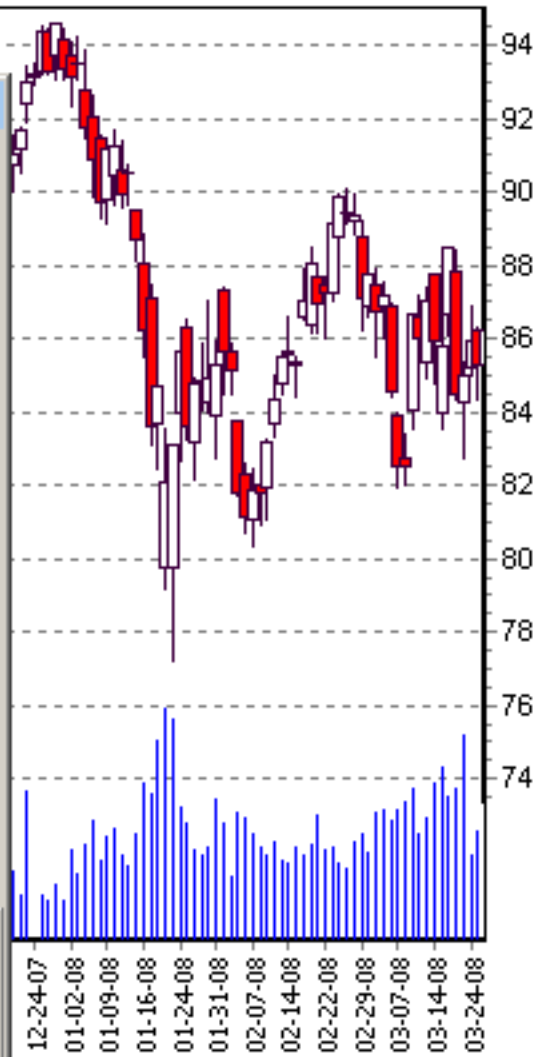
Preparing the model for training...



Would you like to start aftertraining or destroy trained model and start training from the beginning?

- What training process do we start?
- Aftertraining of already trained model
  - Forget all and start from the beginning

Back Next Finish ? Help X Cancel



Vertical toolbar with icons for chart manipulation and the text 'ZigZag' and 'Mave'.

New Open Update Save Learn Predict Settings Help Info

Exit

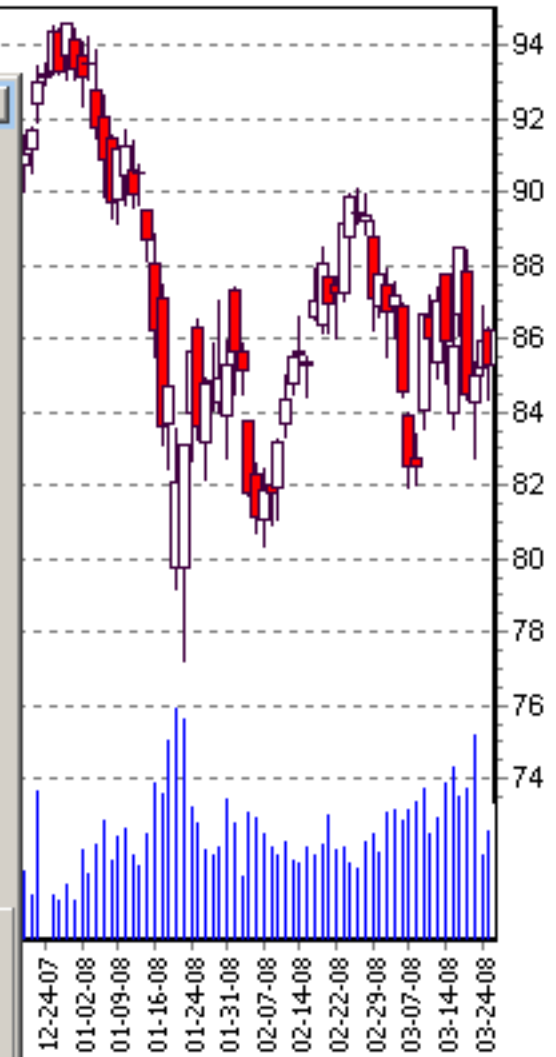


Preparing the model for training...



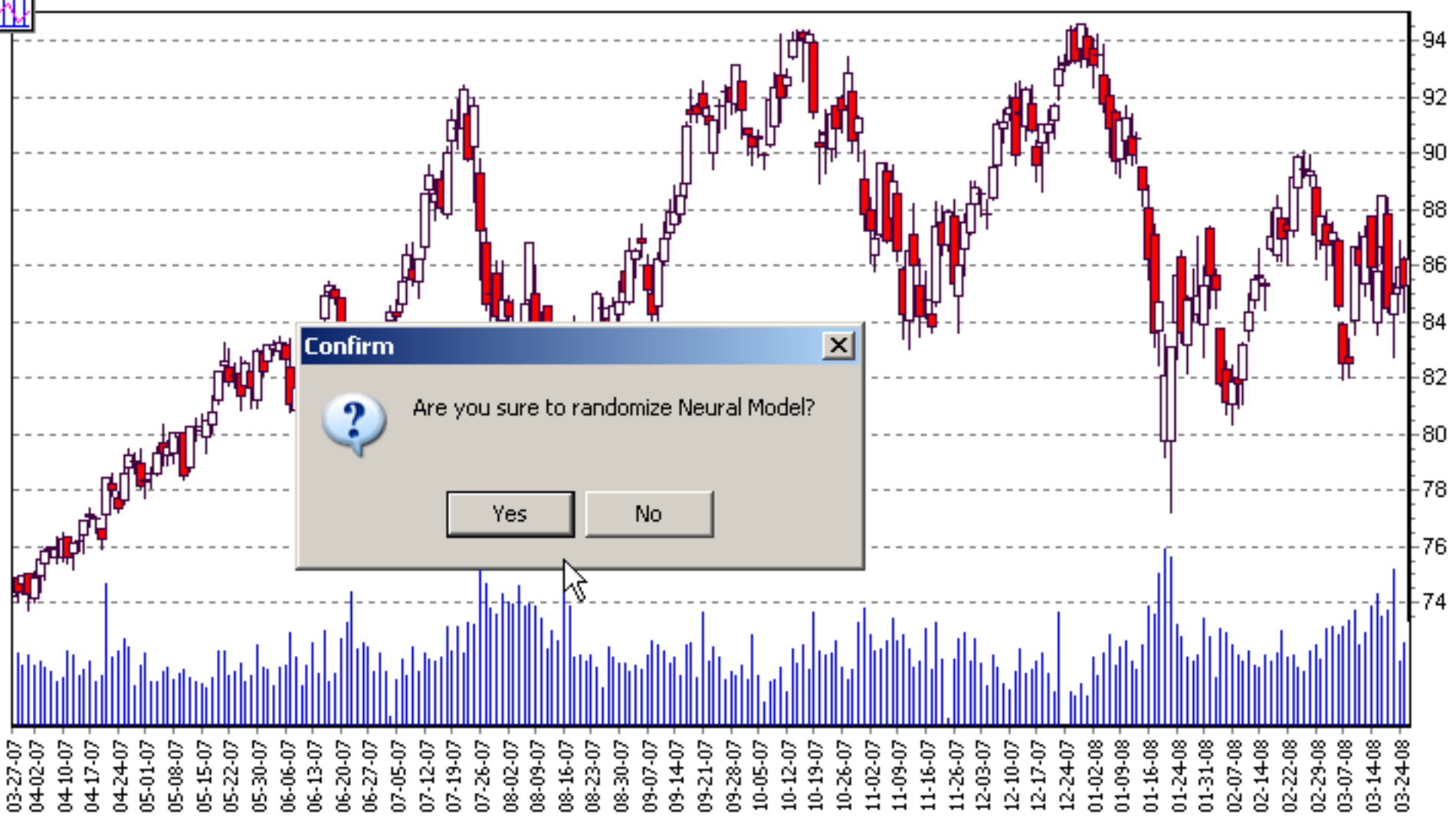
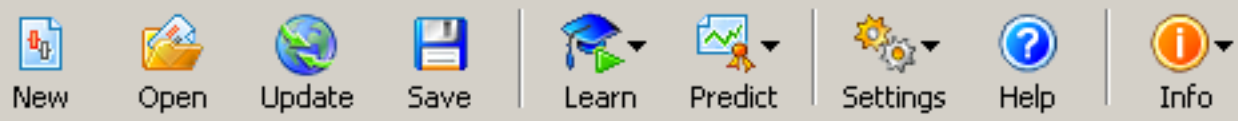
Now we're ready to start training of your model. Remember, that it may take quite long time depending on all the model's parameters...

Back Next Finish Help Cancel



Technical analysis toolbar with icons for pan, zoom, and other chart functions.

Mave ZigZag



Mave ZigZag



New Open Update Save Learn Predict Settings Help Info

Exit

Chart Data tables System Performance Current

- Make Predictions On Entire Dataset
- Make Predictions On Out-Of-Sample Period
- Make Predictions On Last 15 Bars
- Make Predictions On Last 30 bars**
- Make Predictions On Last 45 bars
- Make Predictions On Last 60 bars
- Clear Chart Signals

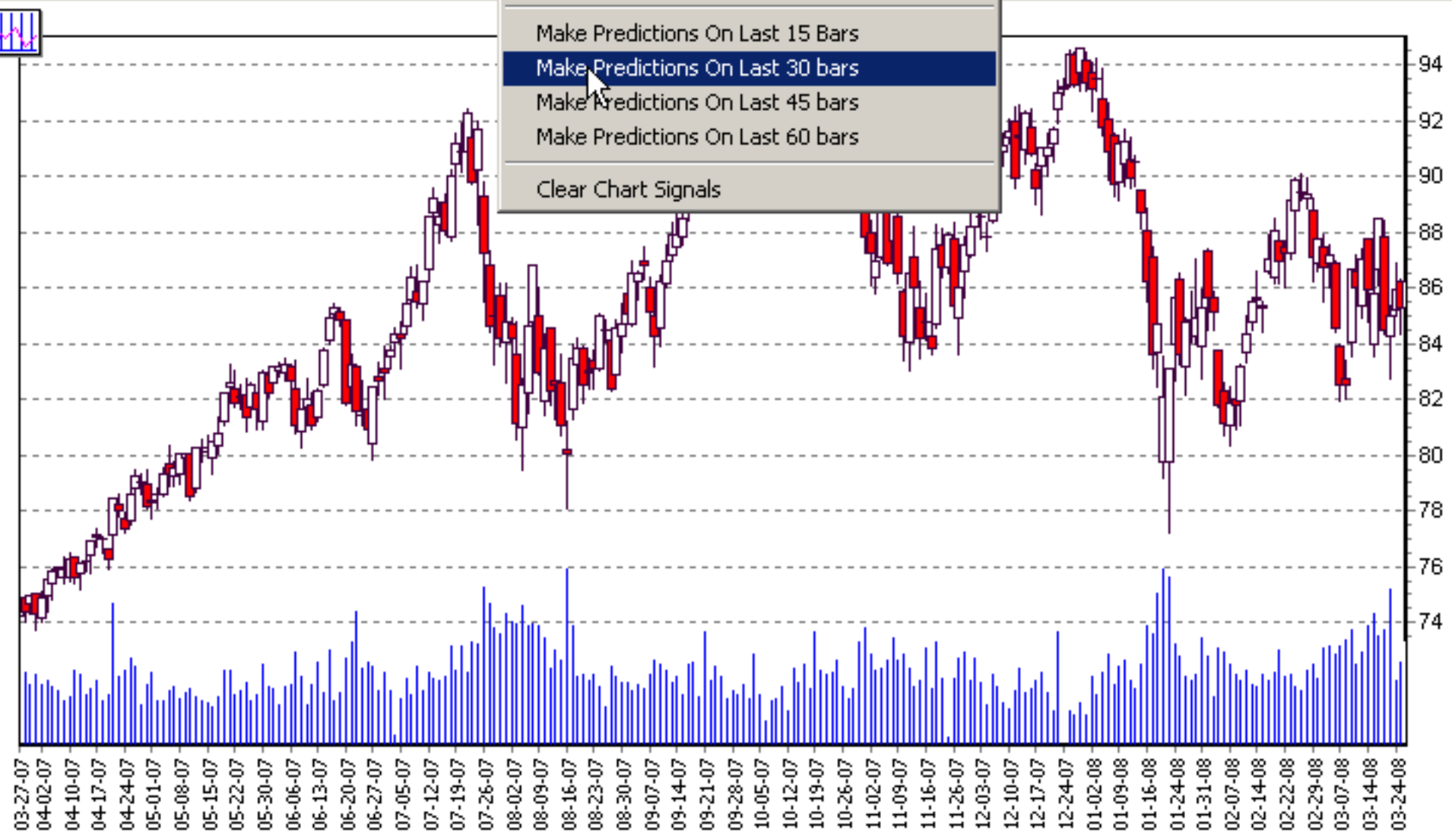
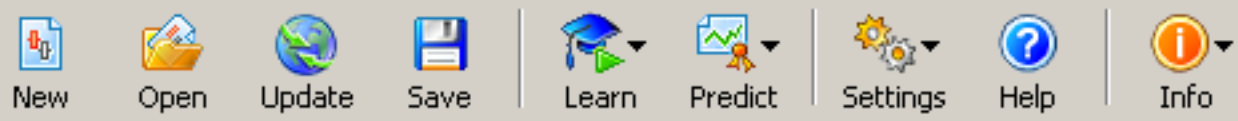


Chart navigation and analysis tools including pan, zoom, and indicator options.

Mave ZigZag



Profit value: -0.81 %

